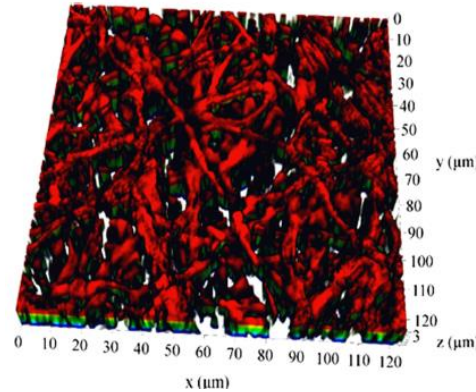
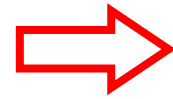


Investigator: Prof. Aravinda N Raghavan

Research Problem

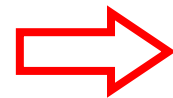
Mechanics of Fungal Biofilms



Translation

Biofilm-based membranes
to treat wastewater

Thermo-mechanics of
edible composites



Ingestible stress sensors

Collaborators

Prof. Asma Ahmed, Nottingham University, UK
Prof. Balaji Gopalan, BITS, Hyderabad Campus
Prof. Aritra Chatterjee, BITS, Hyderabad Campus

Funds

Leverhulme Trust, UK
CDRF, BITS

PhD students

Aiswarya N M
Siddarth K V
Pawan Kumar Reddy A